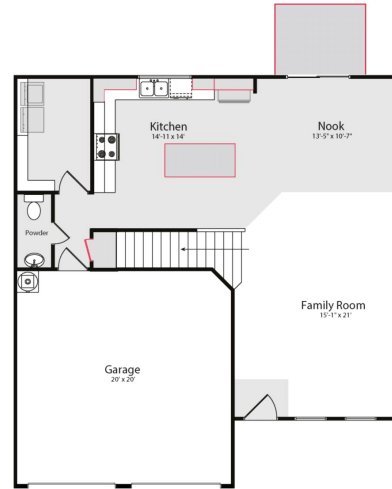


Creekside Estates

\$ 242,405

111 WILLOW CREEK LN



HOME FEATURES

MAGNOLIA - 218601 R

2139 sq ft / 4 BEDS / 2 BATHS / 1 PWDR

2 GARAGE / 2-STORY

Espresso Kitchen Cabinets with Crown Moulding

Large Kitchen Island

Decorative Lighting in Kitchen

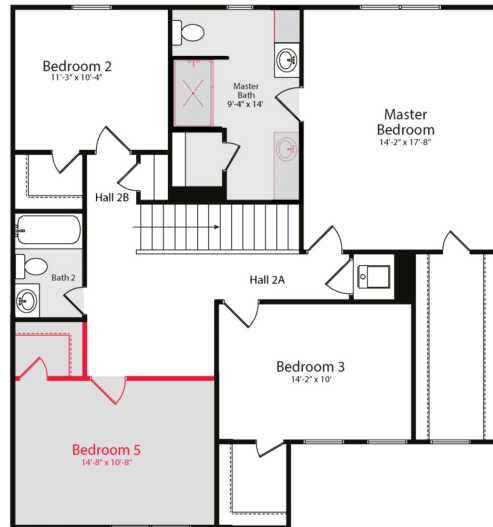
Stainless Steel Whirlpool Kitchen Appliances including Microwave

Energy Saving Insulation and Vinyl Windows

Master Suite Features Dual Vanities and 60" Shower

Full Sod

Front and Side Irrigation



AVAILABLE JANUARY 2021

Printed: 12/3/2020 6:28:16 AM

FOR MORE INFORMATION CALL
(469) 614-2060 (o)
Patricia Garza @ 214.789.9974



Home and community information, including pricing, included features, terms, availability and amenities, are subject to change and prior sale at any time without notice or obligation. Drawings, pictures, photographs, video, square footages, floor plans, elevations, features, colors and sizes are approximate for illustration purposes only and will vary from the home as built. Images do not reflect a racial or ethnic preference. Home prices refer to the base price of the house and do not include options or premiums, unless otherwise indicated for a specific home. Nothing on our website should be construed as legal, accounting or tax advice. Incentives and seller contributions may require the use of certain lenders or title companies, some of which may be affiliates of HISTORYMAKER Homes, and could affect your loan amount. Not all people will qualify for all offers. Promotional offers are typically limited to specific homes and communities and are subject to terms and conditions. Plans, elevations, dimensions, and treatments may vary between communities. Please consult a HISTORYMAKER Homes sales agent and review a home sales contract for additional information, disclosures and disclaimers.

100 Spring Creek Lane, Terrell, TX 75160