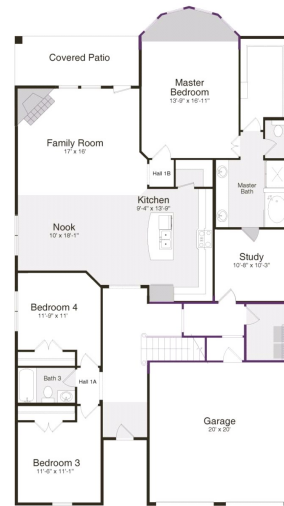


**Mill Valley** **\$ 391,846**

**1900 GRAHAM WAY**



**HOME FEATURES**

**SERENADE - 209501 B**

2895 sq ft / 4 BEDS / 3 BATHS

2 GARAGE / 2-STORY

10' Ceilings Throughout First Floor

Wood Flooring in First Floor Living Areas

42" Kitchen Cabinets with Crown Moulding

Granite Countertops, Ceramic Tile Backsplash and Large Kitchen Island

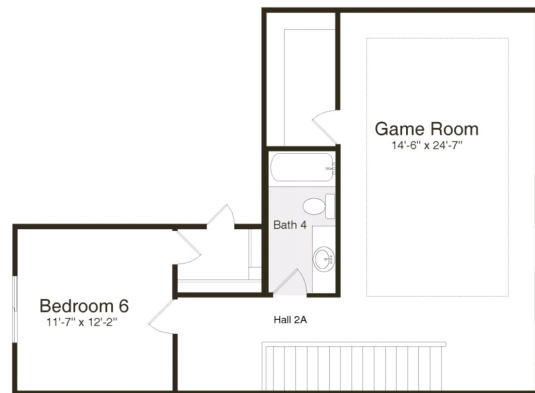
Stainless Steel Whirlpool Kitchen Appliances including Microwave

Fireplace with Arched Balboa Cast Stone Face and Mantle

Master Suite includes Bay Window, Tray Ceiling, Dual Sink Vanity and Separate Ceramic Tile Shower and Garden Tub with Window

Full Gutters and Downspouts, Full Sod and Full Irrigation System with Rotary Heads

Covered Patio



**AVAILABLE APRIL 2021**

Printed: 1/5/2021 5:52:20 AM

**FOR MORE INFORMATION CALL**  
**(817) 385-9209 (o)**  
 Tammy Maverick @ 817.300.8500



Home and community information, including pricing, included features, terms, availability and amenities, are subject to change and prior sale at any time without notice or obligation. Drawings, pictures, photographs, video, square footages, floor plans, elevations, features, colors and sizes are approximate for illustration purposes only and will vary from the home as built. Images do not reflect a racial or ethnic preference. Home prices refer to the base price of the house and do not include options or premiums, unless otherwise indicated for a specific home. Nothing on our website should be construed as legal, accounting or tax advice. Incentives and seller contributions may require the use of certain lenders or title companies, some of which may be affiliates of Rendition Homes, and could affect your loan amount. Not all people will qualify for all offers. Promotional offers are typically limited to specific homes and communities and are subject to terms and conditions. Plans, elevations, dimensions, and treatments may vary between communities. Please consult a Rendition Homes sales agent and review a home sales contract for additional information, disclosures and disclaimers.

1914 Gristmill Drive, Mansfield, TX 76065