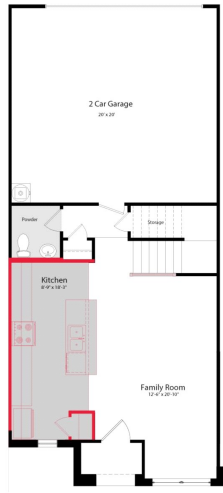


**Brentwood Place Townhomes** **\$ 235,991**

**3520 CRICKET DRIVE -BLDG 20**



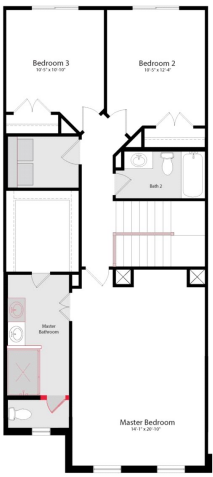
REPRESENTATIVE IMAGE\*



## HOME FEATURES

**BOWIE - 162801 K**

- 1592 sq ft / 3 BEDS / 2 BATHS / 1 PWDR
- 2 GARAGE / 2-STORY
- 9' Ceilings Throughout First Floor
- Espresso Kitchen Cabinets with Crown Moulding
- Large Kitchen Island
- Decorative Lighting in Kitchen
- Stainless Steel Whirlpool Appliances including Side by Side Refrigerator and Microwave
- Energy Saving Insulation and Vinyl Windows
- Storage Under the Stairs
- Master Suite includes Dual Sink Vanity and 60" Ceramic Tile Shower
- Full Gutters with Downspouts, Full Sod and Full Irrigation with Rotary Heads



**AVAILABLE NOW!**

Printed: 1/17/2021 6:23:04 AM

**FOR MORE INFORMATION CALL**  
**(940) 293-1107 (o)**  
Amy Benton @ 817.996.9857



Home and community information, including pricing, included features, terms, availability and amenities, are subject to change and prior sale at any time without notice or obligation. Drawings, pictures, photographs, video, square footages, floor plans, elevations, features, colors and sizes are approximate for illustration purposes only and will vary from the home as built. Images do not reflect a racial or ethnic preference. Nothing on our website should be construed as legal, accounting or tax advice. Incentives and seller contributions may require the use of certain lenders or title companies, some of which may be affiliates of HISTORYMAKER Homes, and could affect your loan amount. Not all people will qualify for all offers. Promotional offers are typically limited to specific homes and communities and are subject to terms and conditions. Plans, elevations, dimensions, and treatments may vary between communities. Please consult a HISTORYMAKER Homes sales agent and review a home sales contract for additional information, disclosures and disclaimers. Brentwood Place Townhomes is a community by Brentwood Place TH, LLC, a Texas limited liability company